

Charlotte Harbor Community Sailing Center Inc.

STANDARD SMALL BOAT SAILING INSTRUCTIONS

1 RULES

- 1.1 The Racing Rules of Sailing (RRS) of the International Sailing Federation (ISAF) govern, except as modified by these instructions.

2 APPLICABILITY

- 2.1 These instructions supersede and cancel all previous instructions, newsletters, or other publications issued prior to Feb. 1-2020.
- 2.2 These racing instructions apply to all small boat fleets for all events sanctioned by the Charlotte Harbor Community Sailing Center.

3 CHANGES

- 3.1 The Race Management Committee may modify these racing instructions with notice on shore prior to the races of the day. Changes may also be given on water before each race by committee boat.

4 ELIGIBILITY AND RATING

- 4.1 Each participating boat must be equipped and maintained according to its class rules and design
 - a. In any class-sanctioned events all skippers must be members of their class organization.
 - b. Boats protested for rating discrepancies, and found not to be in compliance with their rating will be disqualified from the race.
- 4.2 Each participating boat must have a signed waiver form on file with Race Management.

5 SAFETY

- 5.1 Safety is the responsibility of the Skipper of each boat. Each Skipper shall give consideration to their abilities and those of his crew, and the limitations imposed by the design and construction of their vessel in deciding whether they can race safely on the prescribed course under prevailing conditions. Races will not start when sustained winds exceed 20 mph. The Charlotte Harbor Community Sailing Center Inc. or any of its sponsors and partnerships are not responsible or liable for any damage done to persons or equipment in any race sponsored by it.
- 5.2 All boats are required to carry the equipment prescribed by the U.S. Coast Guard regulations and by the State of Florida. All participating boats are urged to carry appropriate liability insurance, otherwise the skipper must be prepared to assume personal liability for any losses or damage for which he is responsible.
- 5.3 The Race Committee Boat or any patrol craft designated by the Race Committee may inspect any participating boat for compliance with these rules.

6 Scoring

- 6.1 Scoring will be the low-Point Scoring System of Appendix A of the racing rules, with as many races as possible, of which one shall be completed to constitute a regatta. Each yacht's total score shall be the sum of her scores for all races except when more than seven races are completed and then there will be one throw out. Portsmouth system will be used when not one-design or match racing. In a match race format the winner will be the one that has won the final elimination race.
- 6.2 The Race Management Committee will establish racing fleet assignments and fleet flag color assignment at skippers meeting.

7 MINIMUM PARTICIPATION

- 7.1 To be eligible for an award a boat shall compete in at least 65% of the races completed, rounded to the next highest whole number.
- 7.2 There must be a minimum of three registered boats to qualify for a separate scoring class for any race or series of races. After a separate scoring class has been qualified for the first race of a series of races, there is no minimum participation requirement for that class to maintain its eligibility for a separate score in the remaining races of the series. Specialty races may require a reassignment of fleets to comply with the minimum participation requirements stated above and shall be determined by the Race Committee Boat prior to the "Warning" signal.

8 IDENTIFICATION

- 8.1 All boats participating in races must have large legible identification numbers (this may be suspended by race committee) displayed on their main sail. It is also recommended that this same number be displayed on spinnakers and headsails as an aid to the Race Committee in boat identification.
- 8.2 Each participant shall approach the Committee Boat on starboard tack and give its name and sail number, and receive acknowledgment from the Race Committee for check-in for each day.

9 RACING SCHEDULE

Saturday February 15

- 8:00 – 9:30 AM Check-in and late registration
- 9:45 AM Skippers Meeting
- 10:15 AM Warning gun, first race of day, subsequent races to follow
No race will start later than TBA.

10 COURSE DETERMINATION AND RADIO COMMUNICATIONS

- 10.1 The Standard Course sheet accompanies these instructions.
- 10.2 The standard course number to be sailed, or a course description, will be displayed on the Committee Boat prior to the 1st Warning Signal.
- 10.3 At the discretion of the Race Committee, stake or lead boats may be assigned positions and duties.
- 10.4 Radio usage and communications between racing boats and the Committee Boat shall be limited to emergencies. A boat shall neither make radio transmissions while racing nor receive radio communications not available to all boats.
- 10.5 Courtesy Broadcasts. Information broadcast by the Designated Observer is provided as a courtesy to competitors and does not in any way alter the competitors' responsibility to observe the Race Committee's visual signals that govern the conduct of the racing.

11 STARTING AND FINISHING LINES

- 11.1 The Start Line will be between a staff displaying an orange flag or shape located on the Race Committee Boat at the starboard end and either an inflatable buoy or government mark at the port end. The Race Committee may set a barging buoy to protect the Committee Boat. This buoy is a continuation of the Committee Boat.
- 11.2 It is standard procedure for the Committee Boat to set the first mark to windward.
- 11.3 The Finish Line may be the same as the Start Line, may be shortened, moved, or reoriented.
- 11.4 At the Finish Line, any substitute Race Committee Boat shall display a RC flag, whose staff will be one end of the line with the other end of the line being the turning mark of the course.

12 STARTING SEQUENCE AND SIGNALS:

12.1 A series of sound signals approximately 30 seconds before warning of first race

3 minutes before 1 st Fleet Start	<u>Sound</u>	Fleet Flag up	Warning Signal
2 minutes before 1 st Fleet Start	<u>Sound</u>	Blue Flag Up	Preparatory Signal
1 minute before 1 st Fleet Start	<u>Sound</u>	Blue flag down	
Start Signal/	<u>SOUND</u>	Fleet flag down/	Start For 1 st Fleet

A series of sound signals approximately 30 seconds before warning

3 minutes 2nd Fleet	<u>Sound</u>	2 nd Fleet Flag up	Warning Signal
2 minutes before 2nd Fleet Start	<u>Sound</u>	Blue Flag Up	Preparatory Signal
1 minute before 2nd Fleet Start	<u>Sound</u>	Blue flag down	
Start Signal/	<u>SOUND</u>	Fleet flag down/	Start For 2nd Fleet /

12.3 There will be an interval between fleet starts.

12.4 A boat shall not start later than 1 minutes after her starting signal.

12.5 Boats whose preparatory signal has not been given shall keep clear of the starting area, and of all boats whose preparatory signal has been given.

13 INDIVIDUAL RECALL

13.1 After a start signal, the Committee Boat will display Code Flag "X" and will attempt to notify the boat or boats being recalled by hailing the sail number and/or name.

14 GENERAL RECALL

14.1 For general recalls, the Race Committee will display the "First Substitute" flag accompanied by two sound signals. The "warning" signal for the recalled fleet shall be made one minute after the "First Substitute" flag is lowered, and the starts for any succeeding fleets shall follow the new start.

15 MARK MISSING

15.1 When a mark is missing, the Race Committee may replace it with a new mark with similar characteristics or a buoy or vessel displaying Code Flag "M".

16 POSTPONEMENT

16.1 Before the starting signal, the Race Committee may postpone a race by displaying the "Answering Pennant" accompanied by two sound signals on the committee boat or on shore. The "Fleet" signal shall be displayed one minute after the Answering Pennant is lowered.

17 TIME LIMIT

1. Time limit shall be at the discretion of the committed boat as to promote fair sailing in acceptable wind condition.

19 BOAT WITHDRAWAL

1. Any boat withdrawing from a race shall notify the Committee Boat.

20 RECORDING

20.1 The Committee Boat will record the order of finish for all boats properly starting.

22 PROTESTS AND REQUEST FOR REDRESS

- 23.1 To initiate a protest a boat shall:
 - a. Immediately hail "Protest" at the boat being protested.
 - b. At the finish of the race or after withdrawal from the race, the boat lodging the protest shall immediately inform the Race Committee of the name and sail number of the boat being protested and/or the skipper of the boat being protested.
 - c. Not later than 1 hour of the committee boat reaching shore the day of the race, the protesting boat shall deliver to the Race Committee Chairperson a written copy of protest on form.
- 23.2 The Committee Person who received the protest shall immediately notify the Protest Committee Chairperson and the protested boat and have a copy of the protest available to each party.
- 23.3 The Protest Committee shall conduct a hearing and post a decision.
- 23.4 Results of the Protest Committee are final.
- 23.5 A boat may request redress under RRS #62. The request shall be on the official protest form and be delivered no later than hour of the committee boat reaching shore the day of the race

24 MAKE UP RACES UP RACES

- 24.1 A makeup race for any race abandoned, canceled or postponed shall be open to all contestants whether or not they sailed in the original race. Any fouls or protests based on the original race will be disregarded except protests under RRS #69.

25 Posting of results

- 25.1 Official race results shall be posted on the bulletin boards at the registration center.**

26 TROPHIES.

27 SPECIAL NOTICES

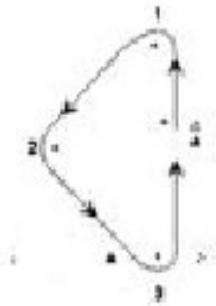
- 27.1 Will be posted on official bulletin board.

Inflatable Mark Courses

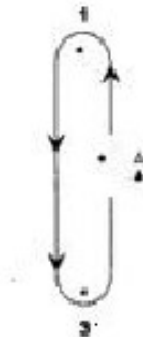
The Race Committee may set inflatable marks for various courses. The Race Committee will display a number representing the course to be sailed and the approximate compass heading and distance to the first mark. A Closed Gate shall be standard. All marks are to be left to port. When the number "2" and the fleet color is displayed, that fleet shall race twice around the course and the closed gate shall still be in effect.

The diagrams illustrated below show the courses, the order in which marks are to be passed, and the side on which the mark is to be left.

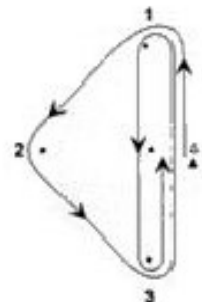
1



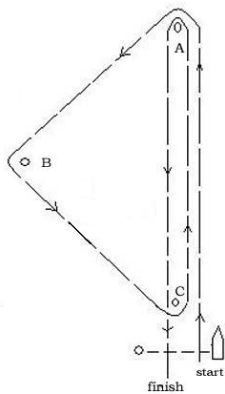
2



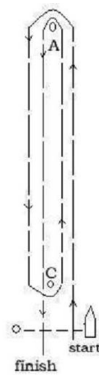
3



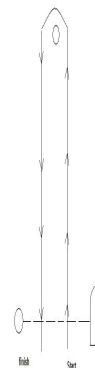
4



5



6



Charlotte Harbor Community Sailing Center Inc.
Small Boat
REGISTRATION FORM

Phone: Dennis- 627-6650 or Bill- 637-2694
CHCSC Race Management,
19246 Palmdale Ct.
Port Charlotte, FL, 33948

Skipper _____
Phone _____
Street _____
City/Zip _____
Boat Name _____
Mfg. & Model _____
Sail No. _____
Length _____

In consideration of your accepting my entry into the Sailing Program, I agree to be bound by the Racing Rules of Sailing, the CHCSC By-Laws and Small Boat Racing Instructions, which I have read and understand. My Boat will be outfitted, equipped and handled in accordance with those instructions, and she shall be properly manned. I waive for myself, my executors and administrators, heir(s) and assigns any and all claims as may accrue to me or them against the Charlotte Harbor Community Sailing Center Inc. or its partnership and or sponsors, its officers, directors, employees and agents and any one or more of them arising out of my participation in the CHCSC's Sailing Program or arising from any related activities.

Skipper's Signature _____
Date _____